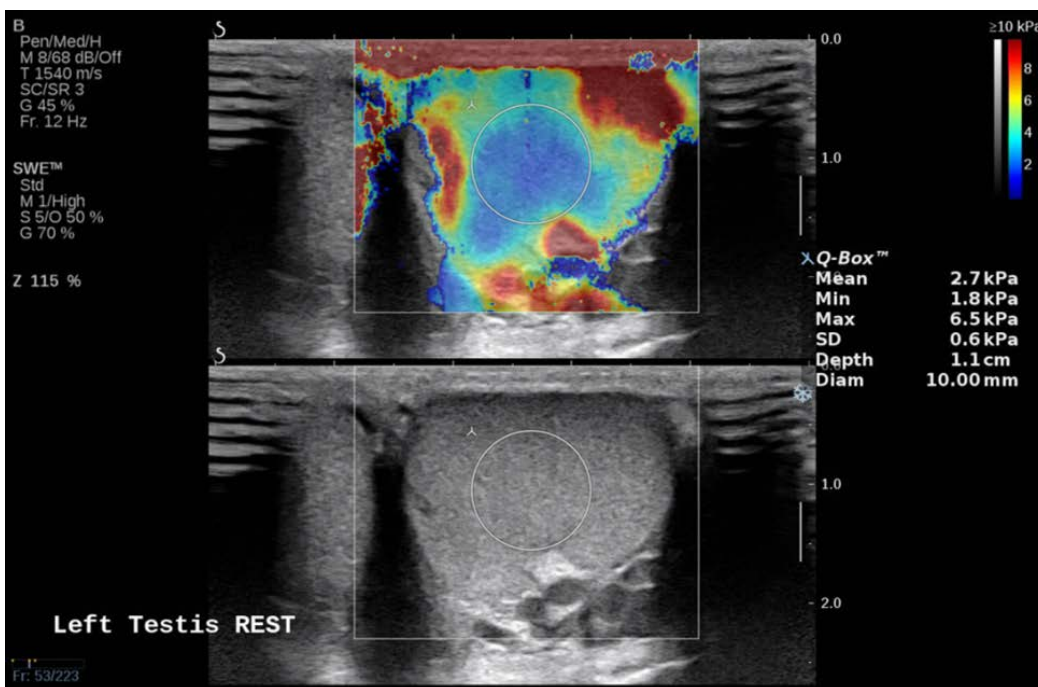


Supplementary Table 1. Results of the *post-hoc* test in the linear mixed-model analysis

Parameter	P-value		
	Grade 1 vs. 2	Grade 1 vs. 3	Grade 2 vs. 3
Absolute change of E_{mean}	0.072	0.010	0.407
Percentage change of E_{mean}	0.038	0.006	0.485

E_{mean} , mean stiffness.



Supplementary Fig. 1. Quantification of the testicular stiffness using shear wave elastography (SWE) in a 13-year-old boy. A color-coded SWE map displaying a spectrum of colors for the related SWE values is generated. If the testicular borders is not clear, the SWE map and synchronized B-mode-ultrasonographic image are displayed together up and down. A 10 mm diameter circular region of interest (ROI) is drawn in the center of the testis and the mediastinum testis is excluded from the ROI. By setting ROI, several quantitative elasticity values are obtained from the system including the mean stiffness.